




ALTAIR



10 Rouseabout Street Lawson ACT

5  3  2 

Discover the epitome of luxury living in Belconnen, where an architecturally designed masterpiece awaits at 10 Rouseabout Street, Lawson. This remarkable residence boasts five bedrooms and three bathrooms, promising a lifestyle of unparalleled sophistication and comfort. With its commanding corner location and awe-inspiring views, it epitomizes luxurious living at its very best.

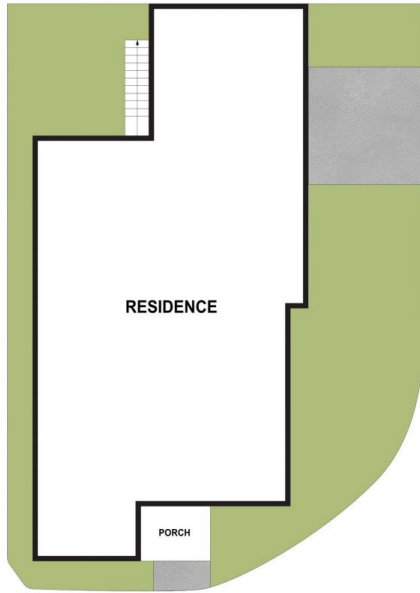
Boasting a functional and versatile floorplan, it is perfect for families of all sizes. This home creates a lasting first impression when stepping in, the magnificent lounge area's foyer space has a 5.5m high ceiling, complete with expansive windows, a grand chandelier, feature fireplace and large tiles.

One of the property's standout features is its elevated position, which grants mesmerizing, captivating views.

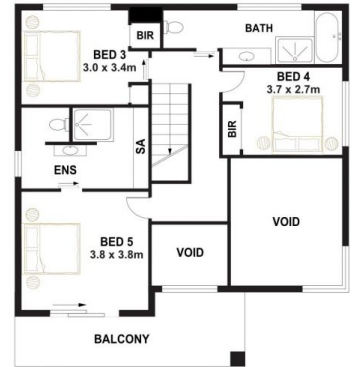
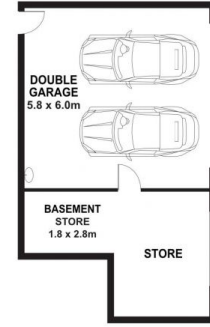
Building Size : 360 sqm
Land Size : 560 sqm
View : <https://www.altairproperty.com.au/sale/act/belconnen/lawson/residential/house/7792084>



Rahul Mehta
0404 895 162



GROUND FLOOR



FIRST FLOOR

PLANS SHOWN ARE FOR MARKETING PURPOSES ONLY, ALL DIMENSIONS ARE APPROXIMATE AND NOT TO SCALE. THEY ARE SUBJECT TO ERRORS AND INACCURACIES AND NO LIABILITY WILL BE ACCEPTED. INTERESTED PARTIES SHOULD MAKE THEIR OWN ENQUIRIES.

10 ROUSEABOUT STREET, LAWSON